



Sioux Valley Energy

Your Touchstone Energy® Partner 

Cooperative Connections

FEBRUARY 2017 VOL. 17 NO. 10



Electricity
Is at the Heart of
the Home P8-9

2017 Budget and Work Plan Approved By SVE Board of Directors



Tim McCarthy
General Manager/CEO

The final days of 2016 ended up being busy for Sioux Valley Energy. Christmas Day ushered in some unwanted ice and poor weather conditions which caused outages stretching into the next day. However, our electric system fared much better than those to the north of us. In fact, once we had our members' services restored we sent eight line workers

to the Milbank area to help with power restoration for the northeastern portion of South Dakota. We are grateful for your patience and support when our employees are working to restore power during a storm.

The board of directors also met just prior to Christmas to consider the 2017 work plan and budget. The Cooperative's top priority for 2017 will be to continue its system improvement plan which will help ensure future reliability for existing and new members. The capital budget has been set at \$17.26 million, which is similar to last year's budget. The top five categories for expenditures in the capital budget are conductor replacements, system improvements, new extensions, transformers and metering and sectionalizing equipment. The plan is to construct/replace 125 miles of overhead and underground line. This will be part of the most recent USDA Rural Utility Service (RUS) four-year loan of \$73.6 million which was approved in 2016.

We anticipate having to spend an additional \$4.2 million as a result of increased costs for purchased wholesale power and additional load requirements. The board approved an overall four percent rate increase to meet the Cooperative's financial requirements. This is a result of the wholesale power increase of nearly 13 percent that took place on August 1st this past summer. We were able to work with our power

suppliers to hold off any increase in 2016. We then went to work internally to develop a plan to mitigate the increase further by utilizing a portion of past deferred revenue. When all was said and done, we were able to hold the increase to four percent in 2017. This will allow us to smooth out any further necessary rate increases over the next three or so years. We will continue to look at this year to year and take steps to ensure any increase is as minimal as possible. Prior to May (when the increase will take effect), we will be conducting a cost of service analysis which will allow us to notify members of the exact impact in each class of service. We have continued to manage our direct cost judiciously and distribution costs will remain steady again this year amounting to approximately \$0.03 of the average rate. There has been very little change to distribution costs over the last decade.

Here is a high level look at the five main components which contribute to your electric rates and the percentage of impact for the average 2017 rate of \$0.10 per kWh:

- **Power costs (67%)**
- **Indirect expenses (15%) -- Which primarily consist of interest, taxes and depreciation.**
- **Payroll (10%)**
- **Direct expenses (6%) -- Which primarily consist of the operations and maintenance, which includes items like customer billing, underground line locating (811) and tree trimming.**
- **Operating margins (2%)**

Our projected equity for 2016 is 35.6 percent and we expect a capital credit retirement of approximately \$1.86 million based on board policy of two and a half percent of total margins and equity.

The Cooperative's directors also approved the continuation of many member-service programs such as rebates that help our members save on their electric bills. Watch for details on new programs, as well, such as our LED yard light and variable frequency drive rebates.

We encourage you to attend your local district meeting this year as we will be going in to greater detail about the rate increase and how it will impact your electric bill. Thanks again for your patronage in 2016 and we look forward to serving you in 2017!



A Touchstone Energy Cooperative
The power of human connections

Cooperative Connections

(USPS No. 497-440)

General Manager/CEO

Tim McCarthy

Editor-Carrie Law

Board of Directors

President, Rodney DeMent, Humboldt, S.D.

Vice President, Allan Weinacht, Colton, S.D.

Secretary, Allan Kooima, Volga, S.D.

Treasurer, Arlyn Zylstra, Jasper, Minn.

Henning Hansen, Elkton, S.D.

Mark Rogen, Garretson, S.D.

Gary Drost, Luverne, Minn.

Bruce Martinson, Jasper, Minn.

Gregg Johnson, Pipestone, Minn.

Gary Fish, Brandon, S.D.

Dave Daniel, Wentworth, S.D.

Sioux Valley Energy Cooperative Connections is published monthly by Sioux Valley Southwestern Electric Cooperative, Inc., PO Box 216, Junction Hwy 34 & 77, Colman, SD 57017, for its members. Customers subscribe to the publication as part of their electric cooperative membership. The purpose of **Sioux Valley Energy Cooperative Connections** is to provide reliable, helpful information to Sioux Valley Energy customers on matters pertaining to electric cooperatives and better living.

Subscription information: Electric cooperative members devote not more than 50 cents from their monthly electric payments for a subscription. Non-member subscriptions are available for \$12 annually. Periodicals Postage Paid at Colman, SD 57017 and at additional mailing offices.

POSTMASTER: Send address changes to:
PO Box 216, Colman, SD 57017.

How to contact us:

Phone: 1-800-234-1960

e-mail: sve@siouxvalleyenergy.com

Website: www.siouxvalleyenergy.com

This institution is an equal opportunity provider and employer. If you wish to file a Civil Rights program complaint of discrimination, complete the USDA Program Discrimination Complaint Form, found online at http://www.ascr.usda.gov/complaint_filing_cust.html, or at any USDA office, or call (866) 632-9992 to request the form. You may also write a letter containing all of the information requested in the form. Send your completed complaint form or letter to us by mail at U.S. Department of Agriculture, Director, Office of Adjudication, 1400 Independence Avenue, S.W., Washington, D.C. 20250-9410, by fax (202) 690-7442 or email at program.intake@usda.gov.



Sioux Valley Energy's headquarters, Colman, S.D.

USDA Rural Development Accepting Applications for REAP

USDA Rural Development reminds farmers, ranchers and small business owners that there is still time to submit an application for the Rural Energy for America Program (REAP). The program provides energy grants and loans to make energy efficiency improvements such as LED lighting, coolers or refrigeration units, doors & windows, insulation or HVAC upgrades, grain dryers, switching from a diesel to electric irrigation motor, replacement of energy-inefficient equipment, etc. Funds can also be used to install renewable energy systems including solar, wind, renewable biomass (including anaerobic digesters), small hydroelectric, hydrogen and geothermal. While applications are accepted year-round, the 2017 application deadline is March 31, 2017.

Eligible agricultural producers and rural small businesses may qualify for the REAP program, which provides a grant of 25% of the eligible project costs or provides a guaranteed loan for up to 75% of the eligible project costs. To be eligible, farmers need to get 50% of their income from farming. In addition, businesses must be classified as small according to the Small Business Administration (SBA) definition, which encompasses most businesses in South Dakota.

For highlights regarding the Rural Energy for America Program, a short YouTube video is available at <https://www.youtube.com/watch?v=9cDXllwIBRU>.

For more information on how to apply for REAP funding in South Dakota, contact Jolene Pravecek, USDA Rural Development Energy Coordinator, jolene.pravecek@sd.usda.gov; (605) 665-2662, Ext. 116.

In Minnesota, contact Ron Omann, USDA Rural Development, 375 Jackson Street, Suite 410, St. Paul, MN 55101; (651)-602-7796; ron.omann@mn.usda.gov <http://www.rd.usda.gov/mn>.



Downed and Dangerous

Downed power lines can be deadly. ALWAYS assume a downed power line is live and avoid going near it or anything in contact with it.

Use Precaution

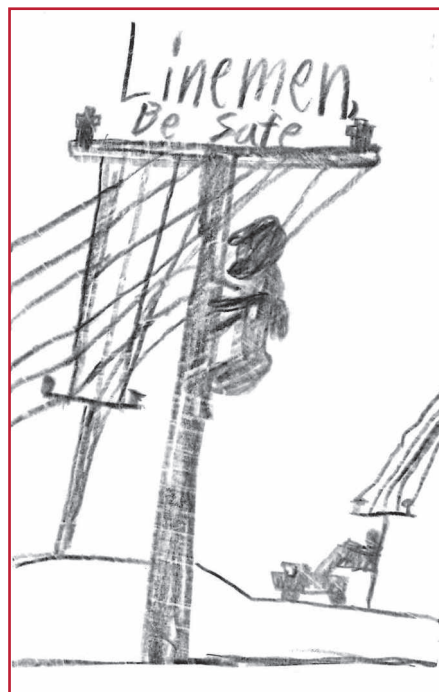
- Downed power lines can energize the ground up to 35 feet away.
- If you see a downed power line, immediately notify local authorities.
- Never drive over downed power lines or through water that is in contact with them.
- Never try to move a downed power line. Even using items that typically are not conductive will not prevent injury or death.

Know What to Do

- The safe way to move away from a downed power line is to shuffle away with small steps, keeping your feet together and on the ground at all times.
- If your car comes in contact with a downed power line while you are inside, stay in the car. Do not touch any part of the car's frame or any other metal. Use a cell phone or honk your horn to summon help. Allow only rescue personnel to approach the car.
- If your car is in contact with a downed power line and you must exit due to fire or another imminent threat:
 - Do not touch your vehicle and the ground at the same time with any part of your body or clothing.
 - Open the door to your vehicle without touching the metal door frame.
 - Jump out of the vehicle with both feet together and so both feet land at the same time.
 - Shuffle away so that the toe of one foot shuffles forward along the length of the other foot, ensuring that both feet are in constant contact and always touching the ground.
- If someone comes in contact with a downed power line or something else that has become electrified, call 911 immediately.
- Never touch someone who has come in contact with a power line. They are energized and pose a danger to anyone who comes in contact with them.
- Remember power lines don't have to fall in order to be dangerous. Always call 811 before you dig and keep yourself and your equipment at least 10 feet from overhead power lines.

Source: esfi.org

Kids' Corner Safety Poster



"Linemen – Be Safe."

Colt Kopren, 9 years old
Colt is the son of Randy and Heidi Kopren, Bison, S.D. They are members of Grand Electric Cooperative, Bison, S.D. Colt's dad is a lineman.

Kids, send your drawing with an electrical safety tip to your local electric cooperative (address found on Page 3). If your poster is published, you'll receive a prize. All entries must include your name, age, mailing address and the names of your parents. Colored drawings are encouraged.

92nd Legislative Session

Get the App!

Connect with S.D. Legislators **ANYTIME. ANYWHERE.**

Download on the App Store
GET IT ON Google Play

(Look under iPhone offerings)

Profiles and contact information on lawmakers, maps of the capitol, links to committees ...and more!



Bountiful Brunch



Favorite Breakfast Bake

- | | |
|-----------------------------------|--------------------------------|
| 1 lb. sausage, cooked and drained | 1/4 cup milk |
| 2 cups frozen hash browns, thawed | 1/2 tsp. salt |
| 1 pkg. crescent rolls | 1/4 tsp. pepper |
| 1 cup shredded Cheddar cheese | 2 T. onion, sliced thin |
| 5 eggs, beaten | 2 T. green pepper, sliced thin |
| | 2 T. Parmesan cheese |

Pat crescent rolls into a 9x13-inch pan that has been sprayed with cooking spray. Spoon sausage over top. Sprinkle on hash browns and Cheddar cheese. Combine eggs, milk, salt and pepper. Gently pour over all. Top with onions and green pepper. Sprinkler with Parmesan cheese. Bake at 375°F. for 30 minutes.

Jane Ham, Rapid City

Ultra-flexible Ham and Veggie Quiche

- | | |
|---|---|
| 1 refrigerated pie crust (half of a 14.1 oz. pkg.) or 8-inch frozen deep-dish pie crust | deli ham, ham steak or honey-glazed ham |
| 1/2 cup sliced green onions or finely chopped white, yellow or red onions | 1/2 cup (2 oz.) shredded sharp Cheddar cheese or provolone or Monterey Jack |
| 1/2 cup vegetable of choice, such as shredded carrots or thinly sliced asparagus, baby green beans or shredded zucchini | 6 eggs |
| 1/2 cup chopped baked ham or | 2/3 cup half-and-half (or 1/3 cup milk and 1/3 cup cream) |
| | 1/2 tsp. salt |
| | 1/4 tsp. black pepper |

Prepare crust, if necessary, according to package directions. Layer onions, carrots (or other vegetables), ham and cheese in crust. In a medium bowl, combine eggs, half-and-half, salt and pepper. Whisk until frothy. Pour mixture over veggies and ham. Bake, uncovered, at 350°F. until the top is set and light golden brown, about 50 minutes. Remove from oven and cool 10 minutes, then slice and serve.

Judy Bierle, Utica

Overnight French Toast

- | | |
|---------------------|-------------------|
| 1/2 cup butter | 5 eggs |
| 3/4 cup brown sugar | 1/2 cup milk |
| 1 tsp. cinnamon | Dash salt |
| 12 slices bread | Vanilla, to taste |

Melt butter in a 9x13-inch pan. Add brown sugar and cinnamon. Put bread in 2 layers across pan. Mix remaining ingredients; pour over bread. Refrigerate overnight. Bake, uncovered, at 350°F. for 30 minutes. Invert on tray and serve.

Mary Jessen, Holabird

Cinnamon Crunch Cake

- | | |
|---|---|
| 2 cups flour | 1 package (2-layer size) white cake mix |
| 1/2 cup firmly packed brown sugar | 1 egg |
| 1/2 cup granulated sugar | 1 cup sour cream |
| 2 T. McCormick® Cinnamon, Ground | 1/4 cup (1/2 stick) butter, melted |
| 1 cup (2 sticks) cold butter, cut into chunks | 1 tsp. McCormick® Pure Vanilla Extract |

Mix flour, sugars and cinnamon in large bowl. Cut in cold butter with pastry blender or 2 knives until mixture resembles coarse crumbs. Set aside. Beat cake mix, egg, sour cream, melted butter and vanilla in large bowl with electric mixer on medium speed about 1 minute or just until mixed. Spread evenly in greased and floured 13x9-inch baking pan. Sprinkle evenly with topping mixture. Bake at 350°F. for 30 to 35 minutes or until cake pulls away from sides of pan. Cool on wire rack. Cut into squares to serve. Makes 24 servings.

Blueberry Crumb Cake: Prepare topping and batter as directed. Spread batter in baking pan. Sprinkle with 1 cup blueberries, then the topping mixture. Bake 45 minutes.

Nutritional Information Per Serving: Calories 265, Total Fat 13g, Cholesterol 41mg, Sodium 226mg, Carbohydrates 34g, Dietary Fiber 1g, Protein 3g

Pictured, Cooperative Connections

Eggs Benedict Casserole

- | | |
|-------------------------|-----------------------------------|
| 8 large eggs | 3/4 lb. Canadian bacon, diced |
| 3 cups milk, divided | 6 English muffins, diced |
| 3 green onions, chopped | 1 (.9 oz.) pkg. hollandaise sauce |
| 1 tsp. onion powder | 1/4 cup butter |

Whisk eggs, 2 cups milk, onions and onion powder together in a large bowl until well mixed. Spray 9x13-inch baking dish with cooking spray. Layer half the Canadian bacon in prepared baking dish. Spread English muffins over meat and top with remaining Canadian bacon. Pour egg mixture over casserole. Cover baking dish with plastic wrap and refrigerate overnight. Sprinkle casserole with paprika; cover with aluminum foil. Bake at 375°F. until eggs are nearly set, about 30 minutes; remove foil. Continue baking until eggs are completely set, about 15 additional minutes. Whisk hollandaise sauce mix with 1 cup milk in a saucepan. Add butter and bring to a boil, stirring frequently. Reduce heat to medium-low, simmer and stir until thickened, about 1 minute. Drizzle sauce over casserole to serve.

Cortney Reedy, Tea

Egg Bake

- | | |
|---------------------------------|------------------|
| 1/2 lb. sausage | 1/2 cup Bisquick |
| 1/2 cup shredded Cheddar cheese | 1 cup milk |
| 2 eggs | |

Mix together; pour into pie plate. Bake at 400°F. for 25 to 30 minutes.

Diana Gillick, Tea

Please send your favorite seafood, appetizer or beverage recipes to your local electric cooperative (address found on Page 3). Each recipe printed will be entered into a drawing for a prize in June 2017. All entries must include your name, mailing address, telephone number and cooperative name.



Choose Renewable Energy for Your Home or Business

You can easily purchase renewable energy from your local electric cooperative, Sioux Valley Energy. Sioux Valley Energy has Renewable Energy Credits (RECs) available for purchase to offset your current usage with 25%, 50%, 75% and 100% renewable energy options.

The electricity you receive will still be the same reliable, affordable energy you have always received from Sioux Valley Energy but, by participating in this program, you will be supporting current and future renewable projects in our area.

Your home or business will be joining hundreds of other people from across the nation who are supporting renewable energy. By purchasing RECs, your business could add value to your products or services, promote future regional renewable projects and showcase your support for renewable energy sources.

FAQ's

What is a Renewable Energy Credit (REC)?

- 1 MWh (megawatt hour) produced by a renewable energy source equals 1 REC
- RECs are also called Green Tags
- RECs represent the valuable renewable attributes of wind energy

How much does it cost?

\$2 per MWh. The average SVE member uses 1,200 kW a month. Participating in the REC program would add the following amount to your monthly bill:

100% = \$2.40	(*Based on the average usage, amount will vary depending on actual usage)
75% = \$1.80	
50% = \$1.20	
25% = \$0.60	

Do I need to purchase any special equipment?

No. Sioux Valley Energy will continue to fulfill all your electric needs and you can enjoy the benefits of renewable energy.

Where do the RECs come from?

The RECs come from several wind farms in the region that supply renewable energy to Sioux Valley Energy. These include, but are not limited to:

- North Dakota: PrairieWinds 1, Wilton 1 & 2, Baldwin Wind Project and Minot Wind Project
- South Dakota: Crow Lake Wind, the Chamberlain turbines, Day County Wind Farm and South Dakota Wind Project



**SIOUX VALLEY
ENERGY**

A Touchstone Energy® Cooperative

1.800.234.1960

paul.mantz@siouxvalleyenergy.com



Sioux Valley Energy 2017 District Meetings

All Members Welcome

A Touchstone Energy® Cooperative 

Complimentary Meal: 5:30 - 7:00 p.m.
Meeting: 7:00 p.m.

**Menu: Beef Brisket,
cheesy hashbrowns, vegetable, & cookie**



Monday, March 6

District 8- Location: Luverne High School Cafeteria (Meal), High School Auditorium (Meeting) - Luverne, MN

Tuesday, March 7

District 10- Location: Edgerton Public School - Edgerton, MN

Monday, March 13

District 2- Location: Sioux Valley Middle School Gym - Volga, SD

Tuesday, March 14

District 4- Location: Dakota Prairie Playhouse - Madison, SD

Thursday, March 16

District 9- Location: Pipestone High School - Pipestone, MN

Monday, March 20

District 3- Location: William J. Janklow Community Center -Flandreau, SD

Tuesday, March 21

District 1- Location: Elkton Community Center - Elkton, SD

****Thursday, March 23**

District 7- Location: West Central School HS Gym - Hartford, SD

****Thursday, March 30**

District 5- Location: Taopi Hall - Colton, SD

****Tuesday, April 4**

District 6- Location: Brandon Valley High School - Brandon, SD

District 6 At-Large Election

The District 6 election will be an at-large election with the top two candidates having the most votes selected to fill the director seats for District 6. The candidate who receives the most votes will serve a 3 year term and the candidate who receives the second most votes will serve a 2 year term for the first election following the passage of the amendment in the Bylaws Article IV. Section 4. Director Districts. In the case of a tie, candidates will draw lots for what term they will fill. Thereafter, the elected directors shall be elected for a three year term.

Election Petition Deadlines: District 7: January 22; District 5: January 29; District 6: February 3

Electricity is the Best Choice

for cost-savings and the environment

Paul Wesslund

KEITH DENNIS SAYS ELECTRICITY IS A GOOD ENERGY choice for the environment. He cites a thought-provoking list of reasons in his peer-reviewed article published in *The Electricity Journal* in November 2015, titled “Environmentally Beneficial Electrification: Electricity as the End-Use Option.”

Dennis is the senior principal of end-use solutions and standards at the National Rural Electric Cooperative Association (NRECA). His article challenges basic assumptions about electricity and the environment that make a difference for top-level policymakers, as well as for co-op members.

His focus on water heaters and heat pumps is especially significant since heating water and air account for more than half of a home’s energy use.

Here are answers Dennis gave to questions about the research behind his article:

A central claim in your article is that an electric water heater has less environmental impact than a natural gas water heater. How can this be true, when burning natural gas emits less greenhouse gas than burning coal, which generates about a third of our nation’s electricity?

Technologies have gotten so advanced that a water heater in your home can be 200 percent or more efficient at converting electricity into heat. It does this by taking some of the energy out of the surrounding air in what’s called a heat pump.

Heat pumps are being used more and more for space heating and more recently, heat pump technology is being used in water heaters.

And a natural gas water heater actually burns the gas in your home. So you need to vent that air out of your home through a flue. To do that, you

are essentially making large holes in your home and pumping air in and out, reducing energy efficiency.

Explain the contention in your article that



buying a gas water heater locks you out of future improvements in efficiency.

Once you install a gas appliance in your home, you are stuck with that technology for its 10- to 20-year life. During that time, solar panels and wind turbines will be generating a bigger share of the nation's electricity. Coal power plant efficiency will be improving. The only way to benefit from those trends would be to have an electric appliance.

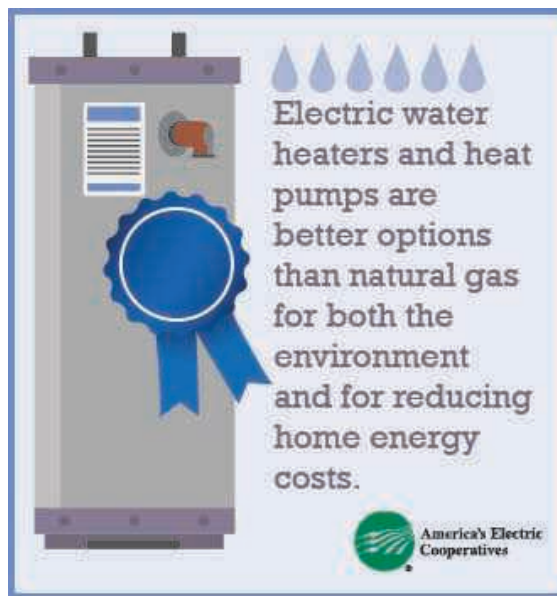
You make a point that using an electric appliance can make you part of a broad, national solution to improving energy efficiency.

In addition to the high efficiency of the electric appliance itself, there are electric system efficiencies that can be achieved through the ability to choose the time when you use the electricity. For example, your water heater is able to operate as a type of battery and better batteries are part of what's needed to make renewable energy more useful. Solar panels only make electricity when the sun shines and wind turbines only make electricity when the wind blows. A hidden value of water heaters is that they can serve as a storage technology – the water they heat stays hot for a long time because they are well insulated. An electric car can work the same way – once it's charged, it stores energy for when it's going to be driven. By storing energy when it is available and then using it when it is needed, these technologies are increasing the overall efficiency of our energy resources.

Many electric co-ops have load-control programs that take advantage of that energy storage ability to more effectively manage the flow of power. Those load control programs return that value to the co-op member by helping pay some of the up-front costs for these more efficient appliances through rebates or other incentives.

You claim there's a huge flaw in the way we calculate a lot of the leading energy efficiency standards, from ENERGY STAR® ratings to construction standards. How do they miss the mark?

The formulas being used to calculate energy efficiency for these major programs don't take into account several realities. Those include the increases in renewable energy and natural gas to generate electricity, power plant efficiencies, load management programs and other advantages of electricity we've talked about in this interview. Those metrics for calculating energy efficiency were designed before a lot of these trends. Despite these trends, the metrics still treat all electricity as coming from inefficient coal plants. That's just clearly wrong.



These incorrect efficiency metrics lead to bad energy decisions. In my article, I quote the Natural Resources Defense Council as saying that these metrics “have serious deficiencies for the purpose of setting a product standard; they are simply not the right numbers to inform good standards decisions.”

NRECA and others have been working with policymakers to change those metrics. What is the status?

Very positive. It's a long bureaucratic process, but we are hoping that the Department of Energy and the Environmental Protection Agency will work with us to address these issues. Along with the environmental community, the renewable energy community and other energy stakeholders, we have begun that process.

You conclude your article with the bold statement that “incentivizing beneficial electrification with appliances available today would immediately reduce carbon dioxide emissions.”

For policymakers and co-op members, more and more you are going to see the ability to achieve end-use emissions reductions and energy efficiency improvements by choosing electric end-use options over direct fossil fuel use like oil, natural gas, gasoline and diesel. This will achieve energy efficiency, cost savings and environmental benefits.

Paul Wesslund writes on cooperative issues for the National Rural Electric Cooperative Association, the Arlington, Va.-based service arm of the nation's 900-plus consumer-owned, not-for-profit electric cooperatives.

\$400 /
PURCHASE AN 85
OR 105 RHEEM
MARATHON
WATER HEATER
FOR \$400
PLUS TAX AT
ONE OF SVE'S
LOCATIONS:
COLMAN,
BRANDON,
PIPESTONE.
THE WATER
HEATER MUST BE
PLACED ON LOAD
CONTROL.

Due to manufacturing delays,
inventory is temporarily
limited at this time. Please
call ahead to assure a water
heater is available or to be
placed on a waiting list.

Special Upfront Pricing on Water Heaters

Sioux Valley Energy will sell 85 and 105 gallon Marathon water heaters to members for \$400 (plus applicable tax) when a load management device is placed on it. The program is only valid for residential domestic water heating purposes. It will not include commercial or agricultural applications. Former Alliant Energy customers are not eligible for this program.

Ask us about our
commercial heat, lighting
and VFD rebates!

www.sioxvalleyenergy.com 1-800-234-1960

SVE WATER HEATER PROGRAM

- **Water heaters sold** under the 2017 special pricing program must be used for residential domestic water heating applications only and installed at a service location receiving electricity from Sioux Valley Energy. Former Alliant Energy customers are not eligible for the water heater and load management programs.
- The member agrees to participate in the load management program for the lifetime of the installed Rheem Marathon water heater. This includes allowing SVE personnel to connect necessary equipment and perform periodic maintenance during normal business hours.
- Under the 2017 program, the discount is given upfront at the time of purchase in lieu of a monthly load management billing credit.
- A contractor may purchase/pick up the water heater at a member's request which constitutes acknowledgement of the terms of the water heater program of the member.
- Special Pricing: 85 and 105 gallon: \$400, plus applicable sales tax. The water heater must be paid for at the time of pick up.
- Upon installation verification by SVE personnel, if it is determined the water heater is installed in a non-residential domestic application, it will be required to be connected to a load management device.
- The member agrees to give Sioux Valley Energy permission to supply the member information obtained on the agreement form for product warranty registration.
- The water heater must be installed within 90 days of purchase. Upon the completion of the water heater installation, the member must contact the Customer Electrical Service Department to schedule the installation of the load management equipment.
- No returns will be accepted after 90 days. The water heater may be returned within that timeframe if the water heater is not damaged, the box is intact, and all literature is included.

WEATHERIZATION REBATE



Sioux Valley Energy provides a weatherization rebate program to assist members in increasing the energy efficiency of their homes. Weatherization home improvements include windows, doors, insulation, caulking and weather stripping. Members can receive a 20% rebate for weatherization project costs (lifetime maximum of \$1,000 per account, not to exceed \$5,000 per member/owner).

- Sioux Valley Energy must conduct an energy audit PRIOR to the work being performed and will inspect the project upon completion.
- The member agrees to pay the audit fees and will be reimbursed \$45 plus tax when the rebate is processed.
- Rebates are available only for home improvement products, not new construction, that meet Energy Star standards. Energy Star labels must be included in the rebate application for each home improvement product.
- Home improvement products such as doors, windows,

insulation, caulk, and weather stripping must be purchased and installed by December 31st of the current year. Rebate dollars are limited and will be paid on a first come, first served basis.

Rheem Marathon Water Heater Warranty

Single Family Dwellings:

- Water heaters installed in a single family dwelling and owned by the original purchaser carry a lifetime tank/6-year parts warranty.
- The product must be registered to qualify for the lifetime tank warranty. Failure to register the product reduces the warranty to 10-year tank/1-year parts.
- The warranty for a single family dwelling converts to 10-year tank/1-year parts upon the sale of the home from the original purchaser.
- The warranty conditions are subject to the proper installation of the water heater according to Rheem's guidelines.

Residential Rental

Properties:

- Water heaters installed in a residential rental property carry a 5-year tank/1-year parts warranty.
- The warranty conditions are subject to the proper installation of the water heater according to Rheem's guidelines.

Weatherization Products:

- Windows and doors must be ENERGY STAR labeled
- Insulation values and levels must meet ENERGY STAR standards
- Other air sealing products such as caulk and weather stripping are eligible
- Complete the Weatherization Rebate Form and submit a copy of proof of purchase/sales receipt for energy efficiency improvements.
- Project costs must be a minimum of \$250.

Where Are They Now?

Rural Electric Youth Tour Alumni Walk Varied Paths

By Brenda Kleinjan

IN 1963, ELECTRIC COOPERATIVES IN SOUTH Dakota started sending teenagers to Washington, D.C., for a week of learning, sight-seeing and meeting with our nation's leaders.

Since then, more than 1,300 students representing South Dakota cooperatives have made the trek which is held each June.

For some participants, the experience serves as a catalyst to explore public service and ways to enrich their communities. For others, it reinforces a sense that the wide open prairies are where they belong and are needed.

After a stint as the Student Association President at South Dakota State University and then finishing a master's degree there, 2008 Youth Tour alum Ben Stout now works to advocate for South Dakota farmers as part of the South Dakota Department of Agriculture.

Stout is the southeast ag development specialist for the Division of Agricultural Development, which assists with the development and promotion of agriculture and agricultural products in the state of South Dakota.

Stout, originally from Philip, S.D., represented

West Central Electric Cooperative in Murdo, S.D., on the tour.

Also representing West Central that year on the trip was Faith Begay of Lower Brule.

After earning an undergraduate degree at Stanford University and a master of public policy degree from Duke University, Begay can be found in Washington, D.C., where she works as a special assistant in the Office of the Assistant Secretary-Indian Affairs in the U.S. Department of Interior in Washington, D.C.

During the 2016 Youth Tour, Faith organized a meeting for the South Dakota and Wisconsin Youth Tour participants to meet with the Assistant Secretary of Indian Affairs, Principal Deputy Assistant Secretary Indian Affairs Larry Roberts, a member of the Oneida Tribe of Indians of Wisconsin.

During the meeting, Begay related to students the importance of getting involved in community and working for change.

A participant from the 1960s reflected on his experience in an e-mail to organizers last fall.

"I went on the 1968 Youth Tour, courtesy of Codington-Clark Co-op," said Maynard Resen,



referring to the Watertown, S.D.,-based cooperative which sent the South Shore native on his first trip to the nation's Capitol.

"It was a great trip, especially for a farm kid who 'didn't get out much.' The introduction to the sights in our nation's capitol was priceless and although I've been back several times, the memories of that first exposure as a teenager have stayed with me," said Resen, who now lives in Wolcottville, Ind.

"The functioning of our government became more understandable on that trip. I'm glad you are still taking young people there for that orientation," Resen wrote.

The connections Resen wrote of resonate through the years.

"The experience awakened me in ways I never thought possible. I think I realized that I really wanted to give back to the community that I reside in. I not only cover the news with my job, I have a real passion for focusing on where my tax dollars are used," said Kevin Larsen, who represented Central Electric Cooperative in Mitchell S.D., on the 2006 trip. Originally from Howard, S.D., Larsen is the news director for KCCR radio in Pierre, S.D.

Viewers of the *Coyote News* broadcast at the University of South Dakota will see Youth Tour alum Nick Nelson in the anchor seat this semester. Nelson, who is from Newell, S.D., represented Butte Electric Cooperative on the 2014 tour.

"What I picked up from Youth Tour was a great fascination with how the government is run in Washington. It gave me an opportunity to get a closer look at what I've seen in the news for a while. If anything, it influenced me to dive deeper and seek a career in journalism to report on many of the things I experienced on Youth Tour," Nelson said.

That insight into how government works is one that influenced others as well, no matter when they participated.

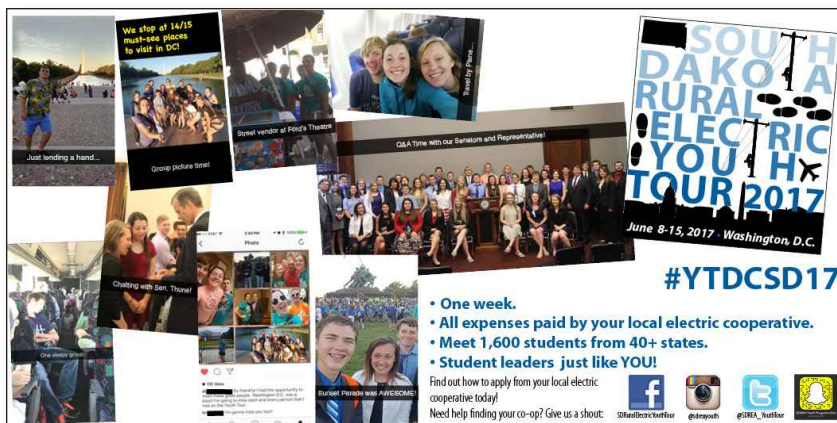
"It was an absolute trip-of-a-lifetime, take lots of pictures – you're going to have so much fun," said Sandra (Hohbach) Sieg as she delivered an impromptu message to the 2016 delegation as they boarded the bus for the ride to the airport. Hohbach was in their seat nearly 45 years prior when she represented what was then Tri-County Electric Association in Plankinton, S.D., on the 1972 trip. (Tri-County is now Central Electric.)

Sieg is project and risk management director for the Sioux Falls Federal Credit Union. The group was holding its annual meeting at the hotel the students were departing from.

"Because the trip offered opportunities to visit the major historical landmarks of D.C., I'll never forget how awestruck I was to see the huge memorials, the White House, the Capitol and the Washington Monument. That experience combined with the chance to see where and how our federal government worked, instilled a sense of patriotism and loyalty to the USA that I still have today," Sieg said. "It was truly humbling to walk through the same halls where history was made by patriots and some of our country's greatest leaders."

Another thing stands out for Sieg.

"In addition, the devastating Rapid City flood occurred while our group was in D.C. I'll never forget the empathy and



compassion shown to members of our group from Rapid City who were worried about how their family and friends might be affected by the flood. It was as true then as it is today – South Dakotans always pull together during times of crisis to support those in need – I witnessed that first hand on this trip," Sieg said. The following year, Sieg's sister, Lynette participated on the trip.

Also in that group was Koreen (Blomberg) Anderson who was representing Grand Electric Cooperative in Bison, S.D.

"The Youth Tour had a very profound, lasting impact on me. Washington, D.C., became a reality rather than just something one hears about," said Anderson, a marketing and grain accountant at the Lemmon, S.D. location of Southwest Grain, a division of CHS Inc. "Its was educational, it was fun, it was many 'firsts' for me. Now many years later, I enjoy hearing the stories that participants share after attending the Youth Tour."

Electric cooperatives in South Dakota and western Minnesota are taking applications for the 2017 Youth Tour. Contact your local electric cooperative for more information on the program.



Left: Sandra (Hohbach) Sieg participated in the 1972 Youth Tour. A chance encounter with the 2016 delegation had her sharing words of advice for last summer's delegation.

Above: Among the participants in the 1973 tour pictured here was Sieg's sister, Lynette, and Koreen Anderson. **Opposite Page:** Youth Tour Alum Faith Begay talks to the 2016 delegation at the U.S. Department of Interior.

LED Lighting Rebates

Sioux Valley Energy offers a LED Lighting Rebate for members for existing homes/businesses. The LED bulbs must be 60 watt incandescent equivalent or higher and must be purchased and applied for in the current year. Each account is eligible to receive a maximum lifetime rebate of \$75 for the LED lighting program. Minimum \$20 rebate request required. Rebate not to exceed cost of bulb before taxes up to \$5/bulb. New construction projects are not eligible for the program.

- A copy of proof of purchase/sales receipt and documentation verifying wattage must be included. Submit the completed rebate form within 90 days of purchase. Documentation will not be returned.
- Rebates will be credited to your electric account.



Rebate dollars for all programs are limited and will be paid on a first come, first served basis.



LOAN PROGRAMS

Sioux Valley Energy offers loans to assist qualifying members in purchasing heat pumps and weatherization products. We offer low interest loans of 5% up to \$10,000 with a seven year term.

Weatherization Loan

- Sioux Valley Energy must conduct an energy audit prior to the work being performed. The member agrees to pay the audit fees and may be eligible for reimbursement for the cost of the audit if they perform the energy saving recommendations from the audit after the project is inspected. Loans are available only for home improvement products, not new construction. Labor to install these products may also be included in the loan. Weatherization products must meet ENERGY STAR standards. Funds will be issued upon project completion in the amount of approved submitted invoices and upon inspection by marketing personnel. Project costs must be a minimum of \$250.

Heat Pump Loan

- An electric air-to-air heat pump (13 SEER or above) or geothermal heat pump must be installed. Labor to install the equipment may also be included in the loan. Loans are not available for electric resistance equipment. Complete the loan application form which is found on the website at www.siouxvalleyenergy.com. The application will be processed upon approval from the Director of Finance and Accounting. Funds will be issued upon project completion in the amount of approved submitted invoices and upon inspection by Customer Electrical Services personnel.

ENERGY AUDITS

Members with existing homes can select the energy audit level that fits their needs. The audit recommendations will provide weatherization and energy saving techniques. Homes constructed in the last five years are not eligible for the Energy Audit Program. Members may be eligible for reimbursement for the cost of a Level I energy audit if they perform the energy savings measures as recommended in the audit.

Level I:

- Onsite energy audit for members considering weatherization upgrades (walk-through audit).
- The charge for Level I audits is \$45.

Level II:

- On-site audit and walk-through energy home inspection.
- Infrared camera imaging to help detect voids around windows and doors or missing/damaged insulation.
- Full audit report with recommendations for energy saving techniques.
- The charge for Level II audits is \$75.

LED YARD LIGHTS

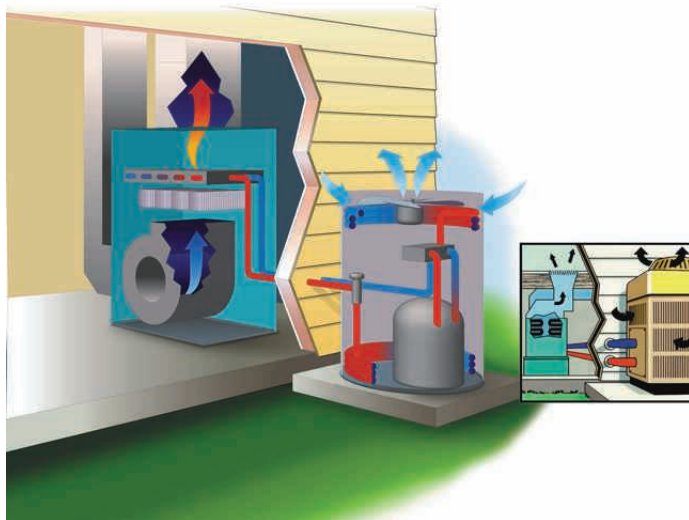
SVE is offering a new rebate program for LED Yard Light Fixture Replacements:

- The LED Yard Light Rebate Program provides a one-time \$30 rebate for the installation of a new Energy Star or Design Lights Consortium (DLC) rated yard light fixture for a member-owned yard light.
- The program is intended to replace yard lights that commonly run from dusk to dawn and are controlled through photo eye sensors during daylight hours.
- The rebate is available for LED fixtures only (not the bulb) that is purchased, installed and applied for in the current year.
- A copy of proof of purchase/sales receipt and documentation verifying equipment information is required within 90 days of purchase.
- Rebates will be credited to your electric account.

Electric Heat/AC Program

REBATES Available for Energy Star Heat Pumps

- \$200 Rebate on ENERGY STAR Air Source Heat Pumps with non-electric back-up heat
- \$600 Rebate on ENERGY STAR Air Source Heat Pumps with electric resistance heat back-up
- \$600 Rebate on Energy Star Geothermal



Program Details

Members who qualify for the electric heat rate save big by installing a separate sub-meter to calculate the reduced heating rate for the billing cycles of October through April. The sub-meter equipment is installed free of charge if placed on a heat pump or electric resistance system 5kW or over. **Former Alliant Energy customers are not eligible for the reduced heat rate at this time but may apply for ENERGY STAR heat pump rebates.**

- **Rebates will be issued for the installation of ENERGY STAR heat pumps.**
 - *A \$200 rebate will be given for an ENERGY STAR air-to-air heat pump that includes a NON-electric backup heat system.
 - *A \$600 rebate for a geothermal heat pump or ENERGY STAR air-to-air heat pump that includes an electric resistance backup heat system.
 - *In addition to the rebate, members can take advantage of low interest financing for their ENERGY STAR electric heating equipment.
 - *AHRI Certification and a final invoice are needed to process ENERGY STAR rebates.
 - *Eligible for a reduced electric heat rate.
- **Loans are available up to \$10,000 at 5% interest with a 7 year term.**

Electric Heat Programs non-ENERGY STAR Heat Pumps

- The sub-meter equipment is installed free of charge.
- Rebates are not available for systems that are not rated as ENERGY STAR.
- Loans are available up to \$10,000 at 5% interest with a seven year term for heat pumps 13 SEER or above.
- Eligible for the reduced heat rate (former Alliant Energy customers are not eligible).

Electric Heat Programs for Electric Resistance

- A \$200 sub-meter equipment fee is charged for the member's share of the installation cost for electric heat 5 kW or under.
- Rebates and loans are not available for electric resistance.
- Eligible for the reduced heat rate (former Alliant Energy customers are not eligible).

Air Conditioning Credit

- Members who agree to connect central air conditioners/heat pumps to Sioux Valley Energy's load management system qualify for a \$6 credit per month for the billing cycles of May through September with a minimum total electric usage of 300 kWh per month. **Former Alliant Energy customers are not eligible for the AC Credit at this time.**

CONTACT THE ENERGY SERVICES DEPARTMENT
at 800-234-1960 for additional information or to sign up for these programs.
You can also email at sve@siouxvalleyenergy.com.

**Rates and programs are subject to change or end without notice.*

SVE is an equal opportunity provider and employer.

Regional Dateline

December 15-March 31

South Dakota Snowmobile
Trails Season, Lead, SD
605-584-3896

January 21

Bark Beetle Blues Crawl
Custer, SD, 605-440-1405

January 21

Tommy: A Bluegrass Opry by
the HillBenders, Spearfish, SD
605-642-7973

January 27-February 5

Annual Black Hills Stock Show
& Rodeo, Rapid City, SD
605-355-3861

January 28

Central Valley Struttin'
Gobblers 12th Annual NWTF
Banquet, Community Center
Humboldt, SD, 605-528-3592
or 605-201-5102

February 3-4

Who Got Greased? Murder
Mystery Dinner Theater
Elks Lodge, 705 Circle Drive
Aberdeen, SD, 605-380-9743

February 3-5

Winterfest of Wheels Car Show
Convention Center
Sioux Falls, SD, 605-231-3100
www.winterfestofwheels.com

February 4

Twenty One Pilots in Concert
Sioux Falls, SD, 605-367-7288

February 4

LHIA Fishing Derby
11 a.m. to 3 p.m., City Boat
Landing Access Point
Lake Hendricks, MN



To have your event listed on this page, send complete information, including date, event, place and contact to your local electric cooperative. Include your name, address and daytime telephone number. Information must be submitted at least eight weeks prior to your event. Please call ahead to confirm date, time and location of event.

Events of Special Note

January 28

Rabbit Hunt, Izaak Walton
Clubhouse, Sioux Falls, SD
605-370-8336

March 24-26

Black Hills Home Builders
Home Show, Rushmore Plaza
Civic Center, Rapid City, SD
blackhillshomebuilders.com

February 7-11

Winter Farm Show
Watertown, SD, 605-886-5814

February 10-11

Strawbale Winery Valentine
Twilight Flights, Renner, SD
605-543-5071

February 10-12

35th Annual Black Hills Sport
Show and Outdoor Expo
Rapid City, SD, 605-394-4115

February 11

Ben Folds with the South
Dakota Symphony
Sioux Falls, SD, 605-367-6000

February 11

Sioux Empire on Tap
Sioux Falls, SD, 605-367-7288

February 16-18

Sioux Falls Sno Jam Comedy
Festival, Sioux Falls, SD
siouxfallssnojamcomedyfest@
gmail.com

February 17-19

Sioux Empire Wacipi
Sioux Falls, SD, 310-922-1886

February 25

Annual Ham Dinner with
Wild Game, Doors open at
5:30, meal at 6:30 p.m.
Izaak Walton Clubhouse
Annual fund-raiser for the
conservation of soil, air
woods, waters and wildlife
Sioux Falls, SD, 605-261-8700

March 4-7

Summit League
Basketball Championship
Sioux Falls, SD, 605-367-7288

March 11-12

2017 Gun Show, American
Legion Hall, Saturday 9 a.m.
to 5 p.m., Sunday 9 a.m. to
3 p.m. MST, Philip, SD
605-859-2635, 605-859-2280
605-859-2892 or
605-859-2219

March 17-18

28 Below Fatbike Race
Lead, SD, 605-584-3435

March 18-19

Black Hills Motorcycle Show
Rushmore Hall, Rushmore
Plaza Civic Center
Rapid City, SD, 605-394-4115

March 24-25, March 31-April 1

59th Annual Schmeckfest
Freeman, SD, 605-925-4237

March 30

McCrossan Banquet Auction
"Wildest Banquet Auction in
the Midwest" featuring
"A night out with the PBR"
5:30 p.m., \$75, Ramkota
Exhibit Hall, 3200 W. Maple
Sioux Falls, SD 605-339-1203

March 31-April 2

Professional Bull Riders
Built Ford Tough Series
Sioux Falls, SD, 605-367-7288